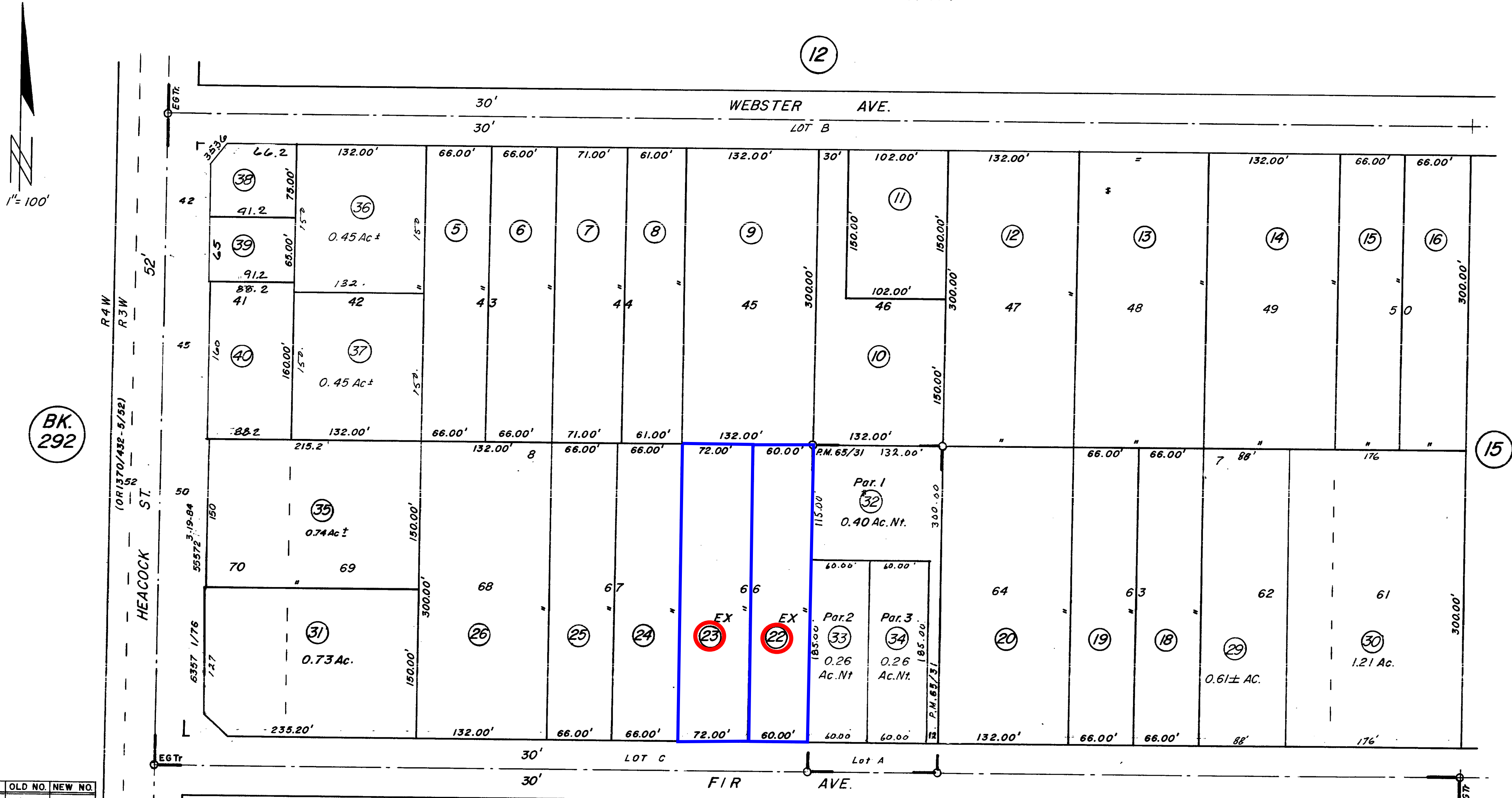


481-13

11-5-1

T.R.A. 021-329

S 1/2, NW 1/4, SW 1/4, SEC. 6, T.3S, R.3W.
 LOTS 41-50 & 61-70 EDMONT GARDENS TRACT



1" = 100'

BK. 292

DATE	OLD NO.	NEW NO.
10/72	17	29, 30
2/76	27	31, T.S.T.
6/79	21	32-34
8-84	28	35, S1.
10/86	4	36, 37
7-93	1	38, S1
"	2	39, S1
12-93	3	40, S1

MAR. 1971

M/B-15/90 EDMONT GARDENS
 P.M. 65/31 Parcel Map 10125

ASSESSOR'S MAP BK. 481 PG. 13
 RIVERSIDE COUNTY, CALIF.

WC